



CITY ENGINEER'S OFFICE

1805 NE 30th AVE, BLDG #600  
OCALA, FLORIDA 34470

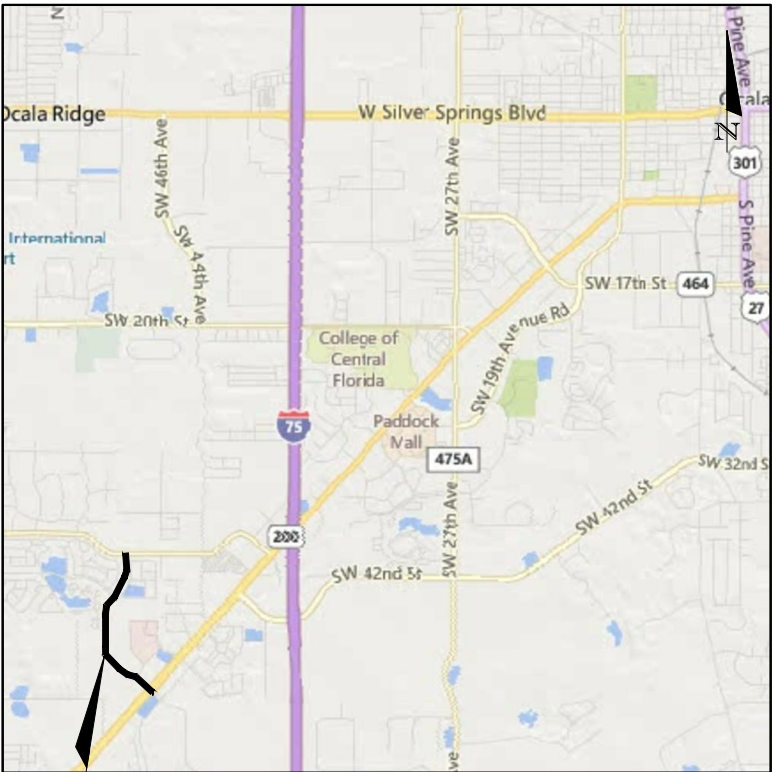
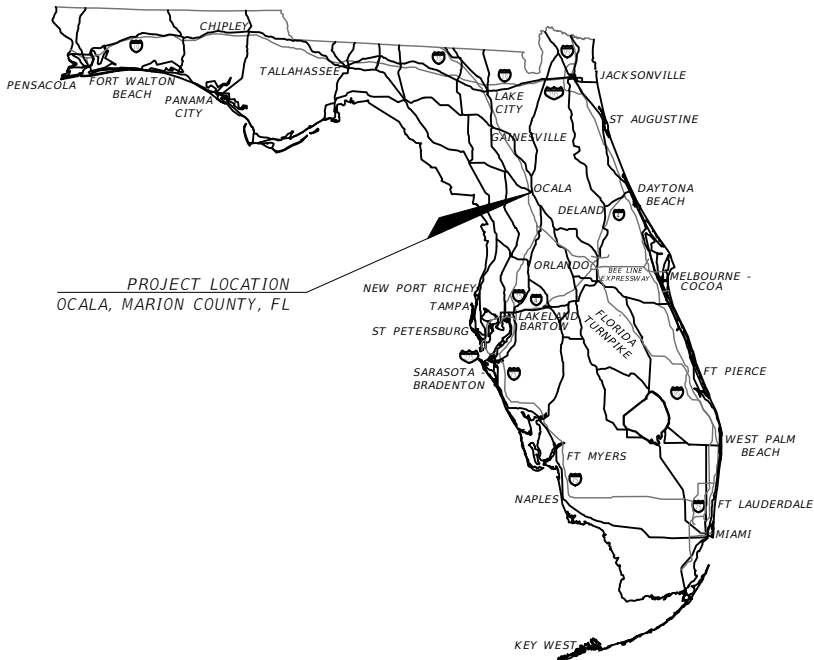
CONTRACT PLANS

ITB NO. 250752

LS 127 FORCE MAIN REROUTE  
PHASE 1

100% PLANS

FOR CONSTRUCTION  
DATE: 06/12/2025



PROJECT LOCATION

UTILITY COMPANY	PHONE NUMBER	EMERGENCY
OCALA PUBLIC WORKS (TRAFFIC)	(352) 351-6733	
OCALA ELECTRIC UTILITES	(352) 351-6650	(352) 351-6666 (LEAVE MESSAGE)
OCALA WATER RESOURCES	(352) 351-6772	(352) 351-6775
COX COMMUNICATIONS	(888) 269-9693	
CENTURYLINK	(352) 368-8817	
TECO GAS	(352) 622-0112	(352) 622-0111

U.S. Department of Transportation, Manual on Uniform Traffic Control  
Devices (Latest Version/Revision)

Florida Department of Transportation, Standard Plans for Road and Bridge  
Construction (Latest Version/Revision)

Florida Department of Transportation, Standard Specifications for Road and  
Bridge Construction (Latest Version/Revision)

Florida Department of Transportation, Manual of Uniform Minimum Standards  
for Design, Construction, & Maintenance of Streets & Highways "Florida  
Green Book" (Latest Version/Revisions)

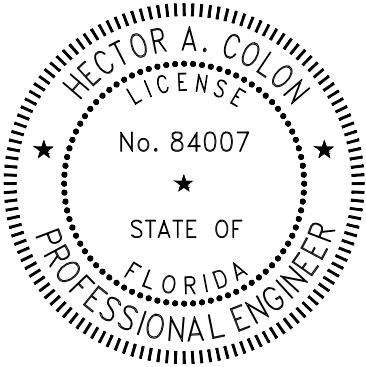
City of Ocala, Land Development Code (Latest Version/Revision)

City of Ocala, Standard Specifications For Construction of Streets,  
Stormwater, Traffic, Water & Sewer Infrastructure (Latest Version/Revision)

SHEET NO.	SHEET DESCRIPTION
1	KEY SHEET
2	SIGNATURE SHEET
3-4	GENERAL NOTES
5-9	PLAN & PROFILE
10	INSET DETAILS



REVISIONS				HECTOR A. COLON, PE P.E. LICENSE NUMBER 84007 CITY OF OCALA, FLORIDA 1805 NE 30TH AVENUE OCALA, FLORIDA 34470	PREPARED BY <b>OCALA</b> CITY ENGINEER'S OFFICE	PROJECT NO. 18305-016 <i>KEY SHEET</i>	SHEET NO. 1
DATE	DESCRIPTION	DATE	DESCRIPTION				
----	----						



CITY OF OCALA  
CITY ENGINEER'S OFFICE  
1805 NE 30TH AVE., BLDG. 300  
OCALA, FL 34470

THE ABOVE NAMED PROFESSIONAL ENGINEER SHALL BE RESPONSIBLE FOR THE FOLLOWING SHEETS IN ACCORDANCE WITH RULE 61G15-23.004, F.A.C.

PLAN INDEX

- KEY SHEET
- SIGNATURE SHEET
- GENERAL NOTES
- ENVIRONMENTAL NOTES
- LEGEND & ABBREVIATIONS
- SWPPP
- PLAN SHEETS

REVISIONS				HECTOR A. COLON, PE P.E. LICENSE NUMBER 84007 CITY OF OCALA, FLORIDA 1805 NE 30TH AVENUE OCALA, FLORIDA 34470	PREPARED BY		PROJECT NO. 18305-016		SHEET NO.	
DATE	DESCRIPTION	DATE	DESCRIPTION				<i>SIGNATURE SHEET</i>		2	
----	-----									

GENERAL NOTES:

- ALL CONSTRUCTIONS SHALL BE IN ACCORDANCE TO THE LATEST EDITION OF THE CITY OF OCALA'S "STANDARD SPECIFICATIONS FOR CONSTRUCTION OF STREETS, STORMWATER, TRAFFIC, WATER & SEWER INFRASTRUCTURE".
- ALL UNSUITABLE MATERIALS ENCOUNTERED SHALL BE DISPOSED OF AND REPLACED WITH APPROVED MATERIALS.
- NEW MAINS TO BE INSTALLED AT 36" DEEP (MIN.) TO TOP OF PIPE EXCEPT WHERE VERTICAL ADJUSTMENTS ARE REQUIRED TO AVOID CONFLICTS. SEE ALSO NOTES 14 AND 15 BELOW.
- ALL UTILITIES SHOWN ON THESE PLANS HAVE BEEN PLOTTED FROM THE BEST AVAILABLE RECORDS. HOWEVER, IT IS THE CONTRACTORS RESPONSIBILITY TO VERIFY THEIR LOCATIONS, SIZES, MATERIALS, AND CONDITIONS FROM THE UTILITY AGENCIES PRIOR TO CONSTRUCTION.
- EXCAVATED MATERIALS SHALL BE LOADED ONTO DUMP TRUCKS DIRECTLY BEHIND THE EQUIPMENT AND HAULED OFF TO THE DESIGNATED SITE. TRAFFIC CONTROL MEASURES SHALL BE PLACED ACCORDINGLY TO ACCOMMODATE THIS PROCESS.
- INSTALL INLET PROTECTION DEVICES AT ALL INLETS TO MINIMIZE DEBRIS ENTERING THE STORM DRAIN SYSTEM. (AS APPROVED BY FDEP)
- THE TRAFFIC CONTROL PLAN FOR THIS PROJECT SHALL BE IN ACCORDANCE WITH THE CURRENT EDITION OF THE "MANUAL ON UNIFORM TRAFFIC CONTROL DEVICES" (MUTCD); THE FLORIDA DEPARTMENT OF TRANSPORTATION ROADWAY AND TRAFFIC DESIGN STANDARDS (STANDARD INDEXES) INDEXES #102-600 THROUGH #102-660, LATEST EDITION; AND ANY REQUIREMENTS OF THE CITY OF OCALA THAT MEET OR EXCEED ANY OF THE ABOVE.
- UNLESS OTHERWISE SPECIFIED ON THE PLANS, THE CONTRACTOR SHALL MAINTAIN TWO LANES OF TRAFFIC IN EACH DIRECTION FOR THE DURATION OF THE PROJECT. THE CONTRACTOR MAY, UPON APPROVAL OF THE ENGINEER IN CHARGE, RESTRICT TRAFFIC TO ONE-WAY OPERATION FOR SHORT PERIODS OF TIME PROVIDED THAT ADEQUATE MEANS OF TRAFFIC CONTROL ARE EFFECTED AND TRAFFIC IS NOT UNREASONABLY DELAYED.
- CONTRACTOR TO REPAIR OR REPLACE ALL PAVEMENT MARKINGS, TRAFFIC LOOPS OR HOMERUNS THAT ARE DAMAGED DURING CONSTRUCTION.
- THE CONTRACTOR SHALL BE RESPONSIBLE TO MAINTAIN ACCEPTABLE ACCESS TO ALL BUSINESSES AND RESIDENCES ALONG THE PROJECT ROUTE WHENEVER CONSTRUCTION INTERFERES WITH THE EXISTING MEANS OF ACCESS. FLAGMEN SHALL BE USED WHEN NO ALTERNATE ACCESS IS POSSIBLE.
- THE REQUIRED TRAFFIC CONTROL DEVICES, WARNING DEVICES, AND BARRIERS SHALL BE ERECTED BY THE CONTRACTOR PRIOR TO COMMENCEMENT OF CONSTRUCTION WHICH MAY CREATE ANY HAZARDOUS CONDITION. THE CONTRACTOR SHALL IMMEDIATELY REMOVE OR COVER ANY DEVICE WHICH DOES NOT APPLY TO THE EXISTING CONDITIONS.
- THE CONTRACTOR SHALL HAVE A STATE OF FLORIDA CERTIFIED MAINTENANCE OF TRAFFIC SUPERVISOR WITH THE RESPONSIBILITY OF MAINTAINING THE POSITIONING AND CONDITION OF ALL TRAFFIC CONTROL DEVICES, WARNING DEVICES AND BARRIERS THROUGHOUT THE DURATION OF THE PROJECT. THE ENGINEER IN CHARGE SHALL BE KEPT ADVISED AS TO THE IDENTIFICATION AND MEANS OF CONTACTING THIS EMPLOYEE ON A 24-HOUR BASIS.
- ALL DISTURBED AREAS SHALL BE RESTORED TO ORIGINAL CONDITION.
- THE CONTRACTOR SHALL BE NOISE SENSITIVE FOR NIGHT OPERATIONS.
- CONTRACTOR TO PERFORM HYDROSTATIC TESTING OF NEW MAINS AND SERVICES.
- NEW OR RELOCATED WATER MAINS SHALL BE LAID TO PROVIDE A HORIZONTAL DISTANCE OF AT LEAST 6 FEET AND PREFERABLY 10 FEET, BETWEEN THE OUTSIDE OF THE WATER MAIN AND THE OUTSIDE OF ANY EXISTING GRAVITY SEWER, SEWER FORCE MAIN, OR RECLAIMED WATER MAINS. THE MINIMUM HORIZONTAL SEPARATION DISTANCE BETWEEN WATER MAINS AND GRAVITY-TYPE SANITARY SEWERS SHALL BE REDUCED TO 3 FEET WHERE BOTTOM OF THE WATER MAIN IS LAID AT LEAST 6 INCHES ABOVE THE TOP OF THE SEWER. NEW OR RELOCATED UNDERGROUND WATER MAINS CROSSING ANY EXISTING OR NEW GRAVITY SEWER SHALL BE LAID SO THE OUTSIDE OF THE WATER MAIN IS AT LEAST 6 INCHES AND PREFERABLY 12 INCHES ABOVE OR AT LEAST 12 INCHES BELOW THE OUTSIDE OF THE OTHER PIPE LINE. IT IS PREFERABLE TO INSTALL THE WATER MAIN ABOVE OTHER PIPE LINES.
- AT THE UTILITY CROSSINGS, ONE FULL LENGTH OF WATER MAIN PIPE SHALL BE CENTERED ABOVE OR BELOW THE CROSSING PIPELINES, SO THAT WATER LINE JOINTS ARE AS FAR AS POSSIBLE FROM THE CROSSING PIPE. PIPE CROSSINGS SHALL BE ARRANGED SO THAT ALL WATER MAIN JOINTS ARE AT LEAST 3 FEET FROM JOINTS IN VACUUM-TYPE RECLAIMED WATER SEWER MAINS AND AT LEAST 6 FEET FROM ALL JOINTS IN GRAVITY SEWERS AND SEWER FORCE MAINS.
- ACTUAL LOCATIONS AND SIZES OF UTILITIES MAY VARY FROM WHAT IS SHOWN. CONTRACTOR IS RESPONSIBLE FOR VERIFICATION PRIOR TO CONSTRUCTION.

CITY OF OCALA STANDARD DETAILS REQUIRED:

- |               |                                      |
|---------------|--------------------------------------|
| 1. #G-8B      | FDOT HIGHWAY JACKING AND BORING      |
| 2. #G-9A & B  | THRUST BLOCKS                        |
| 3. #G-11      | RESTRAINED JOINT SYSTEM              |
| 4. #G-13 & 14 | VALVE BOX INSTALLATION               |
| 5. #G-15A-G   | LOCATING WIRE                        |
| 6. #G-16      | TRENCH EXCAVATION                    |
| 7. #G-17 & 18 | TRENCH BACKFILL                      |
| 8. #G-19      | FULL WIDTH PAVEMENT REPLACEMENT      |
| 9. #G-20      | TRENCH WIDTH REPLACEMENT             |
| 10. #G-26     | TYPICAL SILT FENCE                   |
| 11. #SS-1     | SEWER SYSTEM LEGEND                  |
| 12. #SS-17    | AIR RELEASE VALVE ASSEMBLY           |
| 13. #SS-19    | STANDARD SANITARY SEWER LIFT STATION |
| 14. #W-2      | SEPARATION OF WATER MAINS            |
| 15. #SW-14    | TYPICAL WALKING TRAIL                |

FDOT STANDARD DETAILS REQUIRED:

FDOT INDEX 522-001 CONCRETE SIDEWALK

ENVIRONMENTAL NOTES:

- THE CITY OF OCALA OPERATES UNDER A FDEP NPDES 'GENERAL PERMIT' THAT REQUIRES THE CITY AND, IN TURN, ITS CONTRACTORS TO FOLLOW CERTAIN ENVIRONMENTAL PRACTICES AND PROCEDURES TO PREVENT THE POLLUTION OF THE CITY'S GROUNDWATER AND STORMWATER SYSTEM.
- ALL WATER COLLECTED AND PUMPED DURING TRENCH DEWATERING ACTIVITIES SHALL BE DISPOSED OF IN UPLAND AREAS INTO DISCHARGE LOCATIONS THAT SHALL BE A MINIMUM OF 75 FEET FROM THE NEAREST WATER BODY OR WETLAND AREA TO ALLOW FOR MAXIMUM OVERLAND FILTRATION OF SOIL PARTICLES.
- STAKED SILT SCREEN, TURBIDITY BARRIERS OR OTHER PERIMETER CONTROL METHODS APPROVED BY FDEP SHALL BE UTILIZED AS SILT BARRIERS AND PLACED IN LOCATIONS SHOWN ON THE PLANS AND AT OTHER LOCATIONS AS REQUIRED TO KEEP SEDIMENT FROM REACHING PRIVATE PROPERTY. THESE BARRIERS SHALL BE INSTALLED BEFORE COMMENCING WITH ANY CONSTRUCTION WITHIN OR ADJACENT TO PRIVATE PROPERTY. THE CONTRACTOR SHALL MONITOR AND MAINTAIN ALL SILT BARRIERS AND FENCING INCLUDING DAILY INSPECTIONS TO CHECK THEIR INTEGRITY. ANY LOOSE OR DAMAGED SILT BARRIERS AND FENCING SHALL BE IMMEDIATELY REPAIRED OR REPLACED AS NECESSARY. ONCE CONSTRUCTION IS COMPLETED AND FINISHED GRADING AND STABILIZATION HAS BEEN ACHIEVED, SILT BARRIERS AND FENCING SHALL BE COMPLETELY REMOVED TO THE SATISFACTION OF THE ENGINEER AND BEFORE FINAL ACCEPTANCE.
- THE CONTRACTOR SHALL NOT REMOVE ANY TREES WITHOUT COORDINATING SUCH REMOVAL WITH THE ENGINEER. IF ANY TREES ARE REMOVED IN WETLAND JURISDICTIONAL, OR NATIVE VEGETATION AREAS WITHOUT PROPER AUTHORIZATION, CONTRACTOR SHALL BE RESPONSIBLE FOR PREPARING A DETAILED RESTORATION AND/OR MITIGATION PLAN, SUBMITTING PLAN TO AND OBTAINING APPROVAL FROM FDEP, WATER MANAGEMENT DISTRICT, CITY, OWNER AND ENGINEER, AND COMPLETING ANY MONITORING AND MAINTENANCE REQUIREMENTS IMPOSED AS A RESULT OF TREE REMOVAL.

THE CONTRACTOR SHALL:

- HANDLE, COLLECT, AND DISPOSE OF HAZARDOUS MATERIALS, SANITARY WASTE, AND CONSTRUCTION WASTE MATERIALS ACCORDING TO THE APPLICABLE STATE LAWS AND REGULATIONS, CITY ORDINANCES, OR AS DIRECTED BY THE CITY.
- DESIGNATE AN AREA FOR DISCHARGE OF SURPLUS CONCRETE AN CONCRETE TRUCK DRUM WASH WATER. INSTALL A CONTAINMENT BERM AROUND THIS DESIGNATED AREA TO PREVENT RUNOFF BEYOND THE DESIGNATED AREA. ALL SURPLUS CONCRETE SHALL BE REMOVED FROM THE PROJECT SITE PRIOR TO FINAL INSPECTION.
- STORE AND USE PETROLEUM AND OTHER HAZARDOUS PRODUCTS ACCORDING TO RECOMMENDED PROCEDURES.
- FOLLOW GOOD HOUSEKEEPING PRACTICES TO MINIMIZE THE RISK OF SPILLS OR UNINTENDED EXPOSURE OF PETROLEUM AND OTHER HAZARDOUS MATERIALS TO STORMWATER RUNOFF OR SEEPAGE INTO THE GROUNDWATER.
- HAVE PRE-PREPARED PROCEDURES CLEARLY POSTED FOR SPILL CONTAINMENT AND CLEAN-UP.
- HAVE READILY AVAILABLE REMEDIATION MATERIALS FOR SPILL CONTAINMENT AND CLEAN-UP.
- UPON RELEASE, IMMEDIATELY INITIATE RECOMMENDED METHODS FOR SPILL CONTAINMENT AND CLEAN-UP.
- WITHIN 24-HOURS OF THE SPILL/RELEASE, NOTIFY THE 'STATE WARNING POINT' (AT 1.800.320.0519 OR 1.850.413.9911) OF ALL RELEASES EQUAL TO OR EXCEEDING THE REPORTABLE QUANTITY.

EROSION CONTROL NOTES:

- THE CONTRACTOR SHALL PREVENT THE DISCHARGE OF SEDIMENT DUE TO CONSTRUCTION OPERATIONS. ALL NEW AND EXISTING DRAIN PIPES AND STRUCTURES SHALL BE FLUSHED CLEAN PRIOR TO FINAL PAYMENT.
- ALL STORM SEWER INLETS SHALL BE PROTECTED SO THAT SEDIMENT LADEN WATER WILL NOT ENTER THE STORM SYSTEM WITHOUT FIRST BEING FILTERED.
- ALL DISTURBED AREAS ARE TO BE SODDED. ALL STABILIZATION PRACTICES SHALL BE PERFORMED AS SOON AS PRACTICAL AT LOCATIONS WHERE CONSTRUCTION ACTIVITIES HAVE TEMPORARILY OR PERMANENTLY CEASED. PERMANENT VEGETATION SHALL NOT BE CONSIDERED ESTABLISHED UNTIL GROUND COVER IS ACHIEVED AND, IN THE OPINION OF THE ENGINEER, PROVIDES ADEQUATE COVER AND IS MATURE ENOUGH TO CONTROL SOIL EROSION SATISFACTORILY, TO SURVIVE ADVERSE WEATHER CONDITIONS.
- STAKED SILT FENCE SHALL BE PLACED IN ACCORDANCE WITH CITY OF OCALA SPECIFICATIONS.
- THE CONTRACTOR WILL PROVIDE LITTER CONTROL AND COLLECTION WITHIN THE PROJECT BOUNDARIES DURING CONSTRUCTION ACTIVITIES. ALL FERTILIZERS, HYDROCARBON, OR OTHER CHEMICAL CONTAINERS SHALL BE DISPOSED OF BY THE CONTRACTOR ACCORDING TO EPA'S STANDARD PRACTICES AS DETAILED BY THE MANUFACTURER.
- LOADED HAUL TRUCKS SHALL BE COVERED WITH TARPULIN. EXCESS DIRT ON THE ROAD SHALL BE REMOVED DAILY. AREAS WITHIN THE LIMITS OF CONSTRUCTION SHALL BE DAMPENED WITH WATER AS REQUIRED FOR DUST CONTROL.
- THE CONTRACTOR WILL ADHERE TO ALL STATE AND LOCAL REGULATIONS.
- THE CONTRACTOR WILL BE RESPONSIBLE FOR THE MAINTENANCE AND REPAIRS OF EROSION AND SEDIMENT CONTROL DEVICES, AND REMOVAL OF EROSION AND SEDIMENT CONTROL DEVICES AFTER THE NOTICE OF TERMINATION. MAINTENANCE AND REPAIR REQUIRED FOR THE CONTROL AND ABATEMENT OF EROSION AND WATER POLLUTION SHALL BE INCLUDED IN THE PROJECT COST.
- TOXIC SUBSTANCES SHALL BE DISPOSED OF BY THE CONTRACTOR ACCORDING TO THE EPA'S STANDARD PRACTICES.
- THE FOLLOWING PRACTICES WILL BE USED TO MAINTAIN EROSION AND SEDIMENT CONTROLS:
  - ALL MEASURES WILL BE MAINTAINED IN GOOD WORKING ORDER.
  - IF A REPAIR IS NECESSARY, IT WILL BE INITIATED WITHIN 24 HOURS OF REPORT.
  - ALL POLLUTION CONTROLS SHALL BE MAINTAINED AT ALL TIMES.
  - BUILT UP SEDIMENT WILL BE REMOVED FROM STAKED SILT FENCE WHEN IT HAS REACHED ONE-HALF THE HEIGHT OF THE SILT FENCE.
- POLLUTION CONTROL MEASURES SHALL BE INSPECTED DAILY. WRITTEN DOCUMENTATION OF INSPECTIONS SHALL BE WRITTEN EVERY SEVEN CALENDAR DAYS AND WITHIN 24 HOURS OF A RAIN EVENT OF 0.5 INCHES OR GREATER.
- THE CONTRACTOR WILL PROVIDE THE CITY OF OCALA WITH AN EROSION CONTROL PLAN THAT WILL INCLUDE SPILL REPORTING AND RESPONSE. IF CONTAMINATED SOIL OR GROUNDWATER IS ENCOUNTERED, CONTACT THE PROJECT ENGINEER.

R E V I S I O N S				P R E P A R E D   B Y	P R O J E C T   N O .   1 8 3 0 5 - 0 1 6	SHEET NO.
DATE	DESCRIPTION	DATE	DESCRIPTION			
----	----				<i>GENERAL NOTES</i>	
						3

FDOT NOTES:

1. ALL CONSTRUCTION WITHIN THE FDOT RIGHT-OF-WAY SHALL BE IN ACCORDANCE WITH THE LATEST FDOT DESIGN STANDARDS, AND THE STANDARD SPECIFICATIONS FOR ROAD AND BRIDGE CONSTRUCTION, AND THE UTILITY ACCOMMODATION (UAM).
2. RESTORE AND RE-SOD ALL DISTURBED AREAS WITH ARGENTINE BAHIA IN ACCORDANCE WITH THE FDOT STANDARD SPECIFICATIONS. THE CONTRACTOR SHALL MAINTAIN THAT PORTION OF THE RIGHT-OF-WAY AFFECTED BY THE PERMIT UNTIL VEGETATION IS ESTABLISHED. PERFORM ALL WORK NECESSARY, INCLUDING WATERING AND FERTILIZING, TO SUSTAIN AN ESTABLISHED TURF UNTIL FINAL ACCEPTANCE, AT NO ADDITIONAL EXPENSE TO FDOT OR THE CITY OF OCALA. PROVIDE FILLING, LEVELING, AND REPAIRING OF ANY WASHED OR ERODED AREAS, AS MAY BE NECESSARY.
3. AT SUCH LOCATIONS WHERE FDOT SIGNS, REFLECTORS, OR OTHER STRUCTURES WILL INTERFERE WITH PROPOSED CONSTRUCTION, THE CONTRACTOR SHALL NOTIFY THE LOCAL MAINTENANCE OFFICE OR PROJECT ENGINEER 48 HOURS PRIOR TO CONSTRUCTION. ALL ITEMS THAT REQUIRE RELOCATION OR REPLACEMENT WILL BE THE RESPONSIBILITY OF THE CONTRACTOR. IF THE WORK IS WITHIN 500' OF THE TRAFFIC SIGNAL CONTRACTOR SHALL CONTACT THE CITY OF OCALA PUBLIC WORKS DEPT. - TRAFFIC OPERATIONS (352) 351-6733
4. THE CONTRACTOR IS RESPONSIBLE FOR MOWING, AT NO ADDITIONAL EXPENSE TO FDOT OR THE CITY OF OCALA, ANY AREA WITHIN PUBLIC RIGHT-OF-WAYS WHERE THE PERMITTED WORK OR WHERE UTILITY LOCATE FLAGS PLACED FOR PERMITTED WORK CREATES A HINDRANCE FOR OR INTERFERES WITH MAINTENANCE ENTITY'S REGULAR MOWING OPERATIONS. THE CONTRACTOR SHALL BE RESPONSIBLE FOR MOWING UNTIL ALL SUCH HINDRANCES ARE REMOVED SO THAT REGULAR MAINTENANCE ENTITY MOWING CAN BE RESUMED. THE CONTRACTOR SHALL MEET THE MOWING REQUIREMENTS ESTABLISHED BY THE DEPARTMENT'S MAINTENANCE RATING PROGRAM (MRP). CONTACT THE LOCAL FDOT MAINTENANCE OFFICE FOR DETAILS (352.732.1338)
5. ALL UTILITY LOCATE FLAGS SHALL BE REMOVED BY THE CONTRACTOR WHEN THEY ARE NO LONGER NEEDED.
6. REVIEW AND COMPLY WITH THE "SPECIAL PROVISIONS" AND OTHER ATTACHMENTS TO THE FDOT PERMIT FOR THIS PROJECT.
7. CALL "FLORIDA SUNSHINE ONE-CALL" FOR UTILITY LOCATION SERVICES AT LEAST 2 BUSINESS DAYS PRIOR TO CONSTRUCTION (1-800-432-4770).
8. MAINTENANCE OF TRAFFIC (MOT) PLAN & TRAFFIC CONTROL THROUGHOUT THE WORK ZONE SHALL BE PER THE FDOT STANDARD INDEX 102- 600 SERIES.
9. COORDINATE ALL UTILITY CLEARANCES WITH THE OWNER OF SUCH UTILITIES PRIOR TO CONSTRUCTION COMMENCEMENT.
10. CONTRACTOR SHALL CONDUCT A SIDEWALK SURVEY TO DETERMINE THE EXISTING CONDITION OF AFFECTED SIDEWALKS AND SUBMIT SAID SURVEY TO FDOT AND THE CITY OF OCALA'S ENGINEER OF RECORD PRIOR TO CONSTRUCTION.
11. CONTRACTOR SHALL NOTIFY ALL PROPERTY OWNERS AFFECTED BY PROPOSED CONSTRUCTION ACTIVITIES IN ADVANCE OF SUCH OPERATIONS IN ACCORDANCE WITH FDOT NOTIFICATION REQUIREMENTS.
12. A PRE-CONSTRUCTION CONFERENCE SHALL BE CONDUCTED BY THE CITY OF OCALA WITH THE CONTRACTOR, FDOT PERSONNEL AND MARION COUNTY PERSONNEL.
13. WHERE PAVEMENT HAS TO BE REMOVED, REPLACE PAVEMENT IN ACCORDANCE WITH FDOT INDEX 125-001 TO PROPERLY ABANDON THE FORCE MAIN. PAVEMENT IN FDOT RIGHT-OF-WAY SHALL BE REPLACED TO FDOT STANDARDS IN ACCORDANCE WITH PERMIT REQUIREMENTS. RE-STRIPE PAVEMENT AND RE-INSTALL RPM'S AS REQUIRED.

SURVEY & MAPPING NOTES:

1. BACKGROUND ELEMENTS SHOWN HEREON REPRESENTING THE CONDITION OF EXISTING IMPROVEMENTS AND SURFACE FEATURES LYING WITHIN AND IN NEAR PROXIMITY TO THE PROJECT AREA DEPICTED IN THESE PLANS IS THE RESULT OF THE TOPOGRAPHIC SURVEY CONDUCTED ON THE GROUND BETWEEN OCTOBER 23, 2019 AND JANUARY 7, 2020, RECORD OF WHICH WAS DOCUMENTED IN FIELD BOOK 612, PAGES 25, 30, & 52 THROUGH 78 AND FIELD BOOK 613 PAGE 5, INCLUSIVE, PURSUANT TO SURVEY DIVISION WORK ORDER 19-005022.
2. COORDINATES AND BEARINGS SHOWN HEREON ARE BASED ON THE FLORIDA STATE PLANE COORDINATE SYSTEM (WEST ZONE), NORTH AMERICAN DATUM (NAD) OF 1983 (1990 ADJUSTMENT) AS DETERMINED THROUGH REAL-TIME KINEMATIC (RTK) OBSERVATIONS UTILIZING BOTH GLOBAL POSITIONING SYSTEM (GPS) AND GLOBAL NAVIGATION SATELLITE SYSTEM (GLONASS) CONSTELLATIONS, THE CORRECTIONS TO WHICH WERE RECEIVED FROM THE FLORIDA PERMANENT REFERENCE NETWORK (FPRN) AS OPERATED AND MAINTAINED BY THE FLORIDA DEPARTMENT OF TRANSPORTATION (FDOT).
3. ELEVATIONS ARE BASED ON THE NORTH AMERICAN VERTICAL DATUM (NAVD) OF 1988, AS DETERMINED THROUGH A COMBINATION OF DIFFERENTIAL LEVELING TECHNIQUES AND REAL-TIME KINEMATIC (RTK) OBSERVATIONS (TO OBTAIN GPS-DERIVED HEIGHTS OF CONTROL POINTS ESTABLISHED FOR THIS PROJECT UTILIZING BOTH GLOBAL POSITIONING SYSTEM (GPS) AND GLOBAL NAVIGATION SATELLITE SYSTEM (GLONASS) CONSTELLATIONS, THE CORRECTIONS TO WHICH WERE RECEIVED FROM THE FLORIDA PERMANENT REFERENCE NETWORK (FPRN) AS OPERATED AND MAINTAINED BY THE FLORIDA DEPARTMENT OF TRANSPORTATION) WITH APPROPRIATE CHECKS TO SOURCE BENCHMARK "V 423" (PERMANENT IDENTIFIER "AB5090"), ELEVATION 76.02 FEET, AS PUBLISHED BY THE NATIONAL GEODETIC SURVEY (NGS); SUBSEQUENT MEASUREMENTS USING TRIGONOMETRIC LEVELING TECHNIQUES WERE PERFORMED TO REDUNDANTLY VERIFY THE RELATIVE ELEVATION DIFFERENCES BETWEEN CONTROL POINTS RESULTING IN ELEVATIONS FOR FEATURES WHICH COMPRISE THE EXISTING CONDITIONS SHOWN HEREON WITH AN ACCURACY OF +/- 0.05 FEET.
4. IT IS THE RESPONSIBILITY OF THE CONTRACTOR, PRIOR TO THE COMMENCEMENT OF CONSTRUCTION, TO ENSURE ALL EXISTING SURVEY MARKERS ARE LOCATED, CLEARLY MARKED AND PROTECTED BY THE CONTRACTOR'S SURVEYOR.
5. ANY SURVEY MARKER, INCLUDING BUT NOT LIMITED TO PUBLIC LAND SURVEY SECTION CORNER MARKERS, BENCHMARKS, PROPERTY CORNER MARKERS, ETC., WHICH ARE DISTURBED DURING CONSTRUCTION, SHALL BE REPLACED AT THE CONTRACTOR'S EXPENSE PRIOR TO FINAL PAYMENT.
6. ADDITIONALLY, SURVEY STAKES MARKING THE LOCATION OF MARKERS, PROPERTY LINES, RIGHT-OF-WAY LINES, OR ANY OTHER POINT, PLACED FOR CONSTRUCTION AND SUBSEQUENTLY DISTURBED OR DESTROYED DURING CONSTRUCTION SHALL BE REPLACED AS NEEDED AT THE RESPONSIBILITY OF THE CONTRACTOR.
7. THE RE-SETTING OF MONUMENTS AND MARKERS SHALL BE PERFORMED BY A PROFESSIONAL LAND SURVEYOR LICENSED TO PRACTICE IN THE STATE OF FLORIDA AND SHOWN AS RE-SET ON AS-BUILT PLANS.
8. UNLESS PRIOR AGREEMENTS MADE, IT SHALL NOT BE THE RESPONSIBILITY OF THE CITY SURVEYOR TO REPLACE ANY SURVEY MARKERS.

IMPORTANT NOTE TO CONTRACTOR:  
HORIZONTAL DATUM IS BASED ON THE CITY OF OCALA G.P.S. DERIVED THREE MILE CONTROL GRID, UTILIZING THE NORTH AMERICAN DATUM 1983, 1990 ADJUSTMENT OF THE STATE PLANE COORDINATES, FLORIDA WEST ZONE (902). VERTICAL DATUM IS BASED ON THE CITY OF OCALA G.P.S. DERIVED THREE MILE CONTROL GRID, UTILIZING THE NORTH AMERICAN VERTICAL DATUM OF 1988.

THE CONTRACTOR SHALL FIELD-VERIFY ALL EXISTING UTILITIES IN THE PROJECT AREA AND OTHER UTILITIES WHICH MAY BE AFFECTED BY THE PROPOSED CONSTRUCTION ACTIVITIES. THE CITY OF OCALA WILL MAKE AVAILABLE TO THE CONTRACTOR AWARDED THE PROJECT ALL RELEVANT UTILITY INFORMATION IN THE AREA WITHIN ITS POSSESSION.

ALL PAVEMENT MARKINGS, RPM'S, AND TRAFFIC SIGNAL LOOPS AFFECTED BY THE PROJECT SHALL BE REPLACED

LEGEND

 ASPHALT REPLACEMENT

 CONCRETE REPLACEMENT

 DIRECTIONAL BORE

 BORE & JACK

 TREE REMOVAL

DATUM '88  
C.O.O. SURVEY

CP #1 (PT #12, SHT #5)  
ELEV=90.56  
CNL/SET NL & DISC C00 CP  
N=1750138.59  
E=591763.48

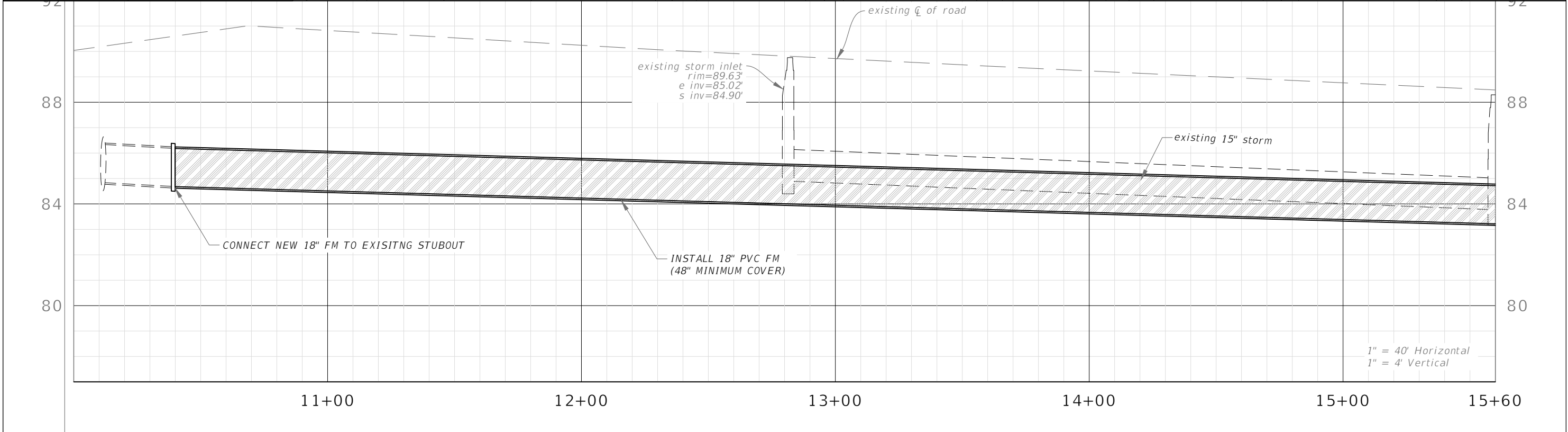
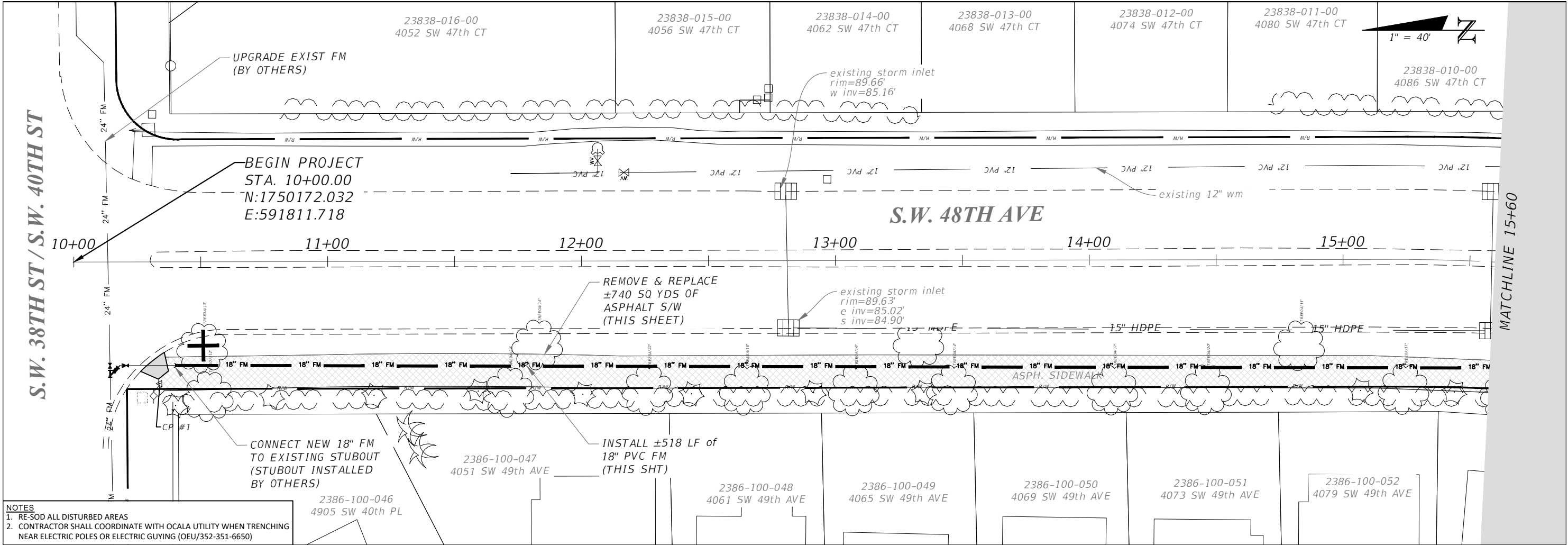
CP #2 (PT #14, SHT #7)  
ELEV=88.15  
CIRC/SET 5/8" C00 CP  
N=1749068.49  
E=591613.96

CP #3 (PT #28, SHT #14)  
ELEV=73.97  
CMON/FD 4X4 PRM LB 4074  
N=1745927.16  
E=592471.16

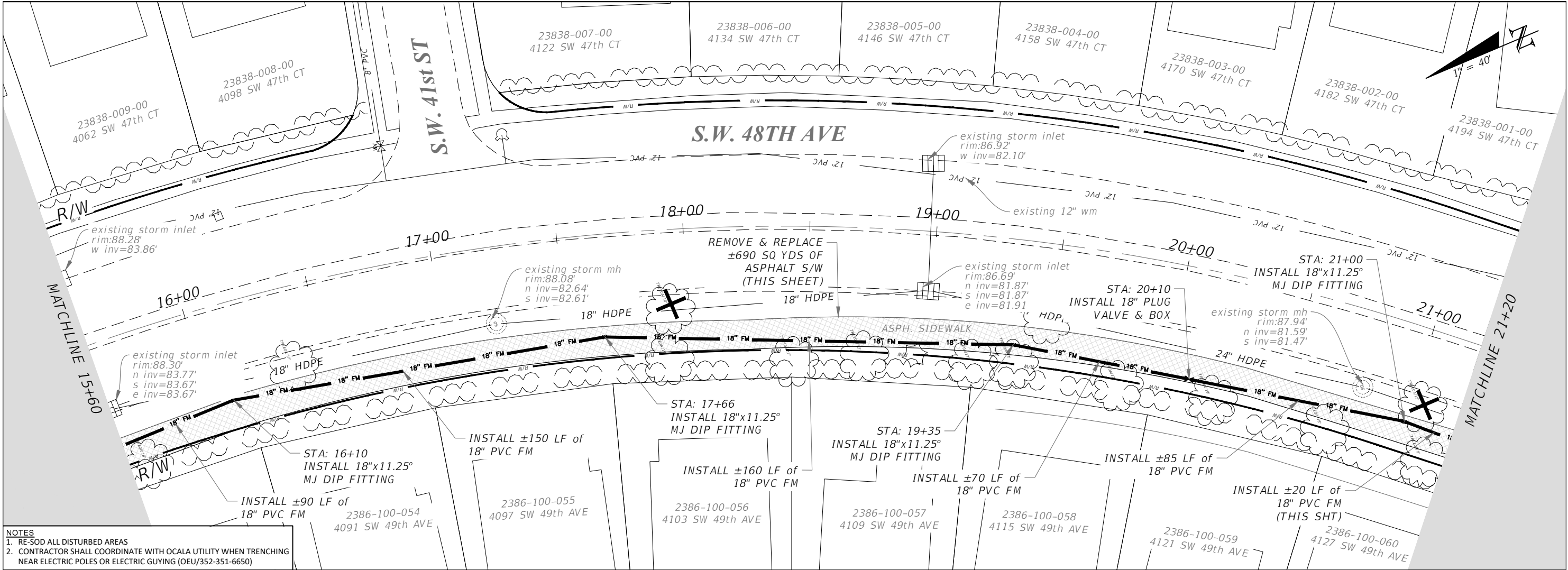
HORIZONTAL & VERTICAL CONTROL

POINT NUMBER	(X) EASTING	(Y) NORTHING	(Z) ELEVATION	DESCRIPTION
12	591763.48	1750138.590	90.56	CNL/SET NL & DISC C00 CP
14	591613.96	1749068.490	88.15	CIRC/SET 5/8" C00 CP
15	592757.24	1745975.870	79.84	CIRC/SET 5/8" C00 CP
16	592938.27	1746410.600	76.27	NL/FD NL & DISC TRAV PT LB 2648
26	592183.13	1746206.570	77.33	IRC/ FD 5/8" PCP LB 4074
28	592471.16	1745927.160	73.97	CMON/FD 4X4 PRM LB 4074
41	591502.61	1746632.740	78.72	NL/FD NL & DISC PRM LB 4704
45	591932.07	1746353.700	83.29	CMON/FD 4X4 PRM LB 1221
53	591106.58	1747266.720	87.58	NL/FD NL & DISC LB 4074
55	591108.99	1747754.650	79.04	NL/FD NL & DISC PRM LB 4074
60	591287.52	1748834.810	88.09	CMON/FD 4X4 PRM LB 1221
92	592880.06	1746106.040	84.94	IRC/FD 1/2" NO ID

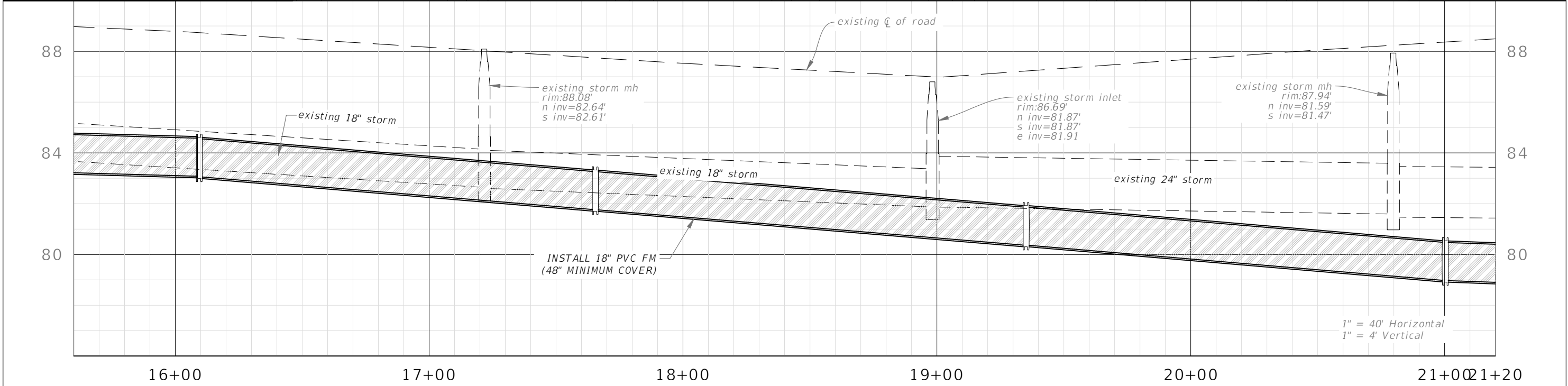
REVISIONS				HECTOR A. COLON, PE P.E. LICENSE NUMBER 84007 CITY OF OCALA, FLORIDA 1805 NE 30TH AVENUE OCALA, FLORIDA 34470	PREPARED BY	PROJECT NO. 18305-016	SHEET NO.
DATE	DESCRIPTION	DATE	DESCRIPTION			<i>GENERAL NOTES</i>	4
----	----						



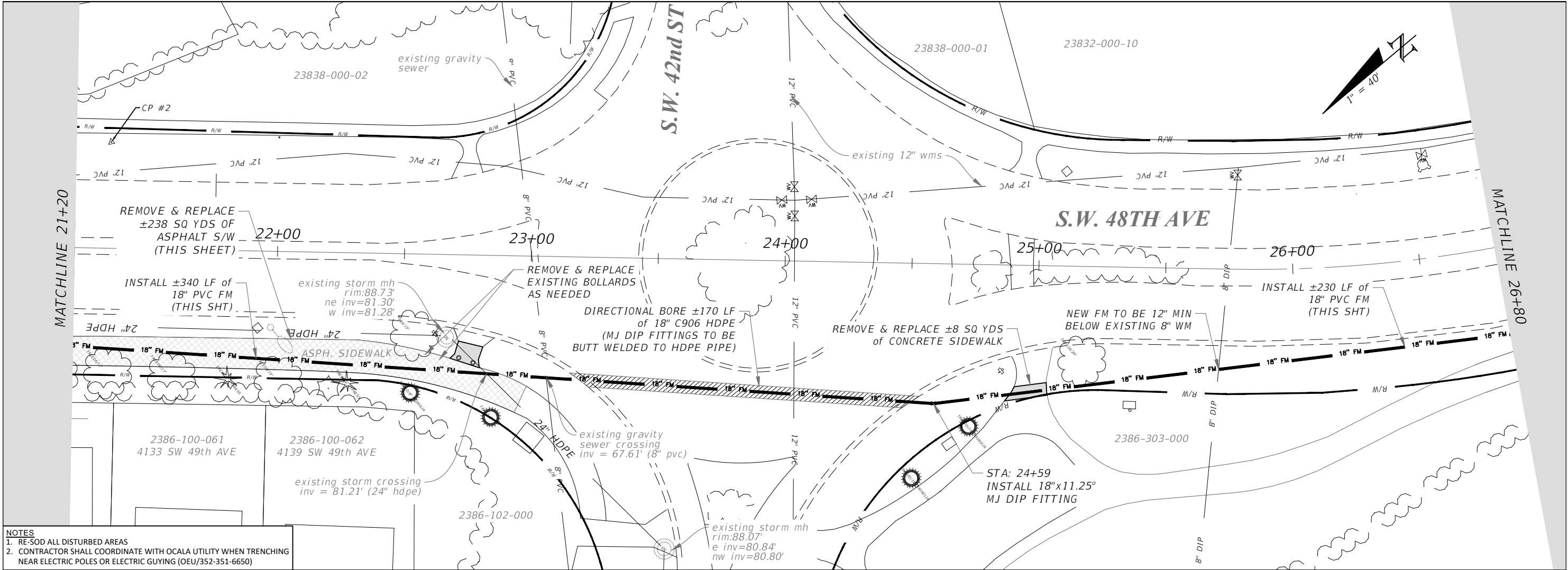
REVISIONS				HECTOR A. COLON, PE P.E. LICENSE NUMBER 84007 CITY OF OCALA, FLORIDA 1805 NE 30TH AVENUE OCALA, FLORIDA 34470	PREPARED BY <div> CITY ENGINEER'S OFFICE</div>	PROJECT NO. 18305-016		SHEET NO.
DATE	DESCRIPTION	DATE	DESCRIPTION			PROJECT NAME: LS 127 FORCE MAIN REROUTE PHASE 1		
----	-----	----	-----			PLAN & PROFILE		5



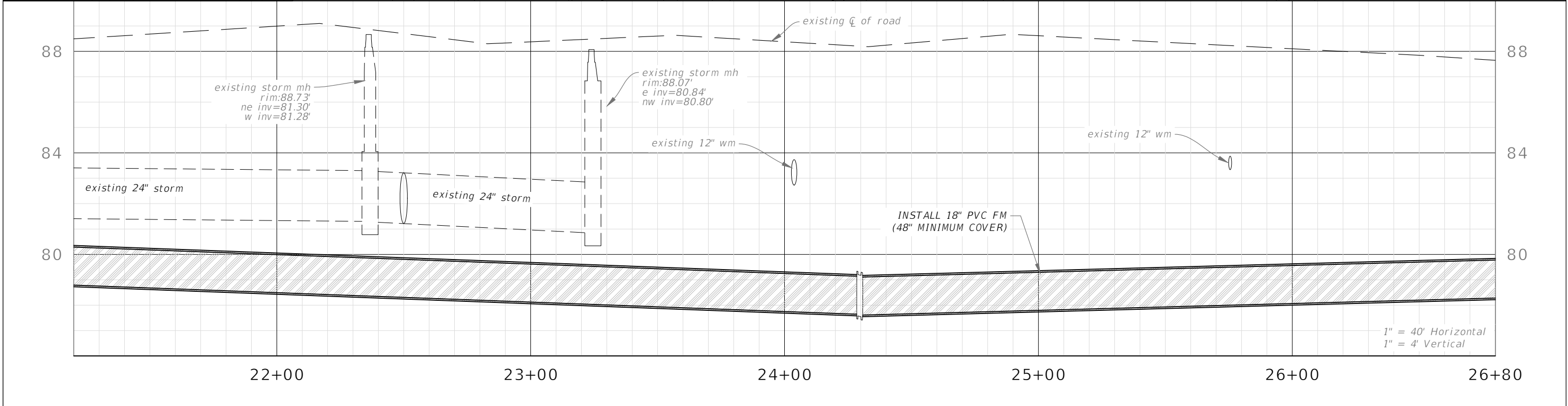
NOTES  
1. RE-SOD ALL DISTURBED AREAS  
2. CONTRACTOR SHALL COORDINATE WITH OCALA UTILITY WHEN TRENCHING NEAR ELECTRIC POLES OR ELECTRIC GUYING (OEU/352-351-6650)



REVISIONS				HECTOR A. COLON, PE P.E. LICENSE NUMBER 84007 CITY OF OCALA, FLORIDA 1805 NE 30TH AVENUE OCALA, FLORIDA 34470	PREPARED BY <div> CITY ENGINEER'S OFFICE</div>	PROJECT NO. 18305-016		SHEET NO.
DATE	DESCRIPTION	DATE	DESCRIPTION			PROJECT NAME: LS 127 FORCE MAIN REROUTE PHASE 1		
----	----	----	----			PLAN & PROFILE		6

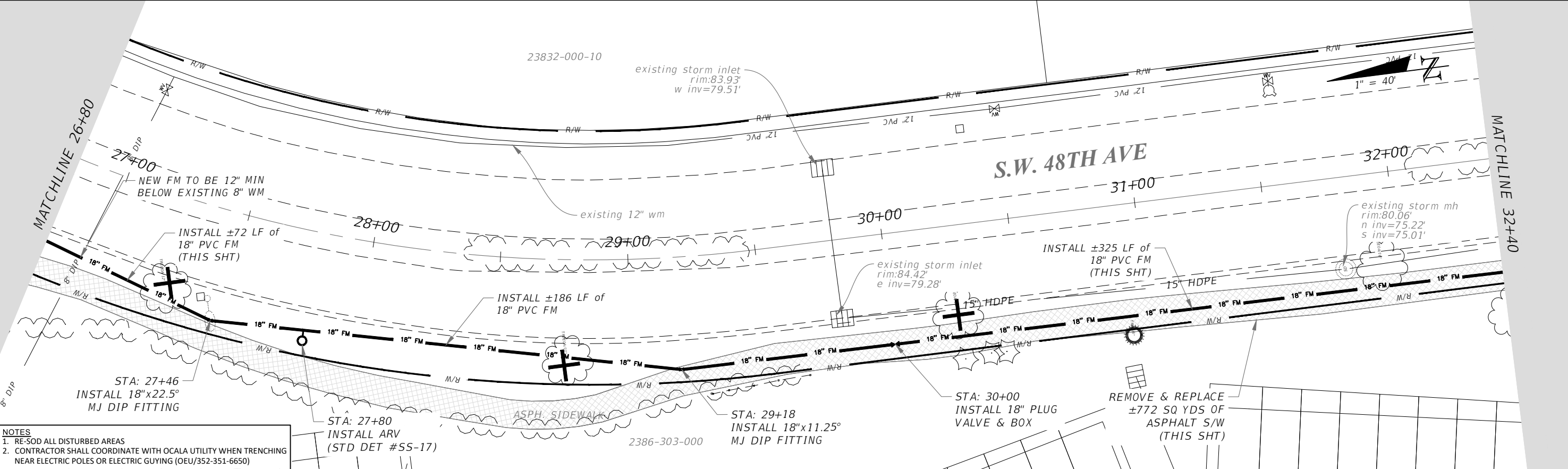


NOTES  
1. RE-SOD ALL DISTURBED AREAS  
2. CONTRACTOR SHALL COORDINATE WITH OCALA UTILITY WHEN TRENCHING NEAR ELECTRIC POLES OR ELECTRIC GUYING (OEU/352-351-6650)

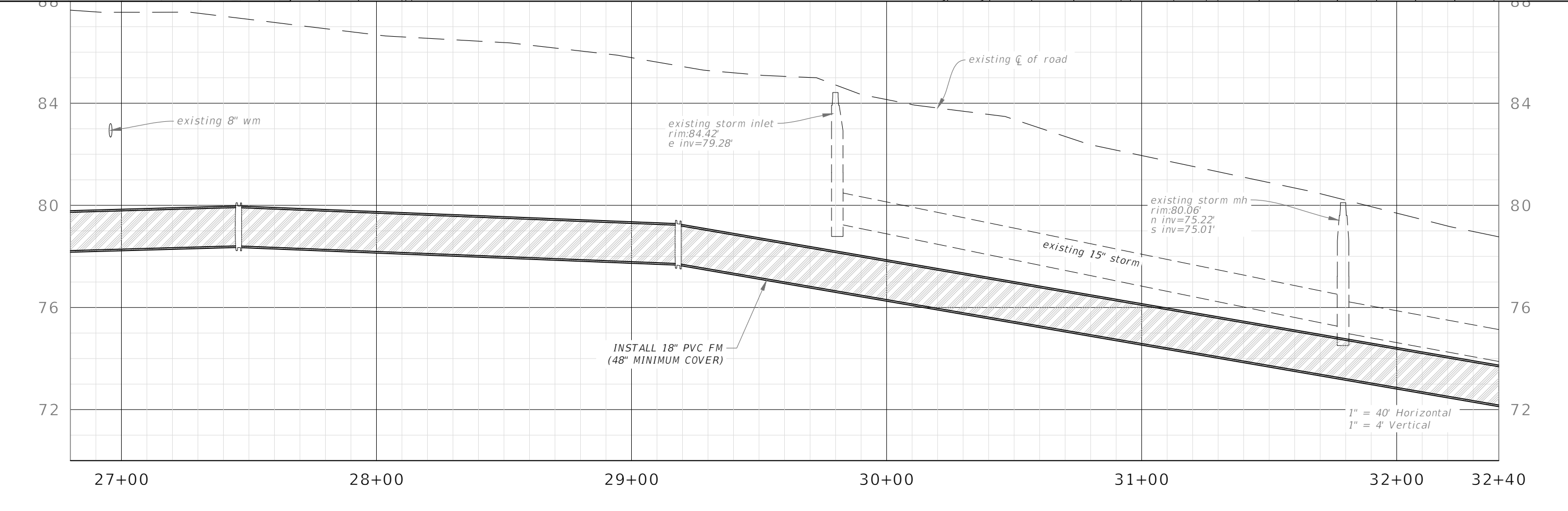


REVISIONS				HECTOR A. COLON, PE P.E. LICENSE NUMBER 84007 CITY OF OCALA, FLORIDA 1805 NE 30TH AVENUE OCALA, FLORIDA 34470	PREPARED BY <div> CITY ENGINEER'S OFFICE</div>	PROJECT NO. 18305-016		SHEET NO.
DATE	DESCRIPTION	DATE	DESCRIPTION			PROJECT NAME: LS 127 FORCE MAIN REROUTE PHASE 1		
----	-----	----	-----			<i>PLAN &amp; PROFILE</i>		7



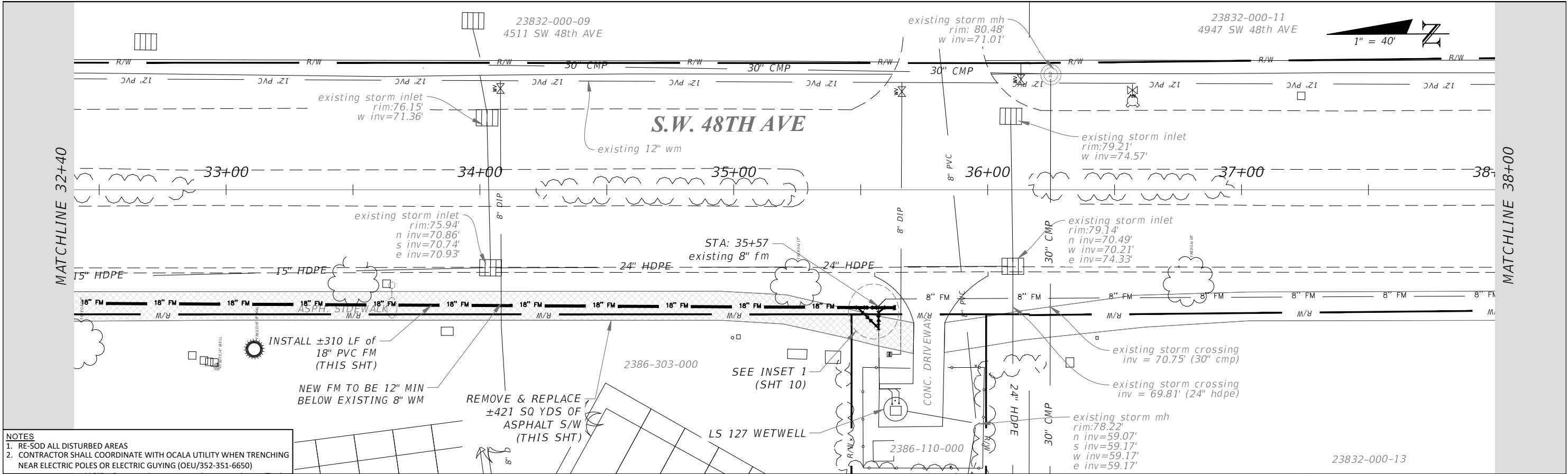


NOTES  
1. RE-SOD ALL DISTURBED AREAS  
2. CONTRACTOR SHALL COORDINATE WITH OCALA UTILITY WHEN TRENCHING NEAR ELECTRIC POLES OR ELECTRIC GUYING (OEU/352-351-6650)

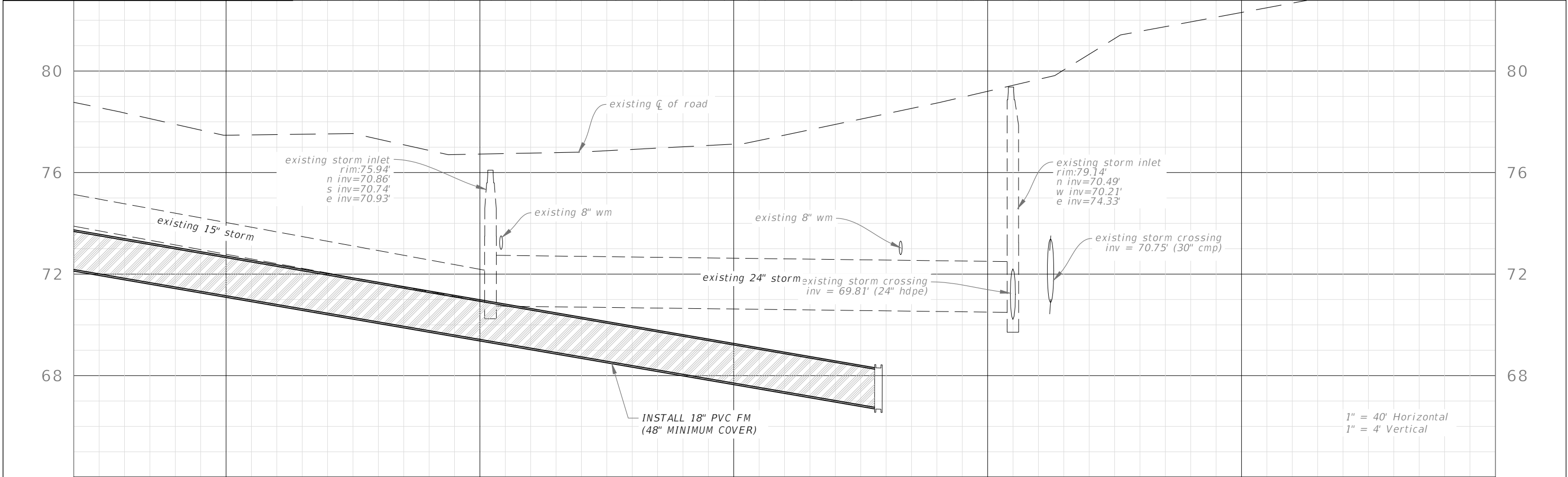



REVISIONS				HECTOR A. COLON, PE P.E. LICENSE NUMBER 84007 CITY OF OCALA, FLORIDA 1805 NE 30TH AVENUE OCALA, FLORIDA 34470	PREPARED BY <div> CITY ENGINEER'S OFFICE</div>	PROJECT NO. 18305-016		SHEET NO.
DATE	DESCRIPTION	DATE	DESCRIPTION			PROJECT NAME: LS 127 FORCE MAIN REROUTE PHASE 1		
----	----							PLAN & PROFILE

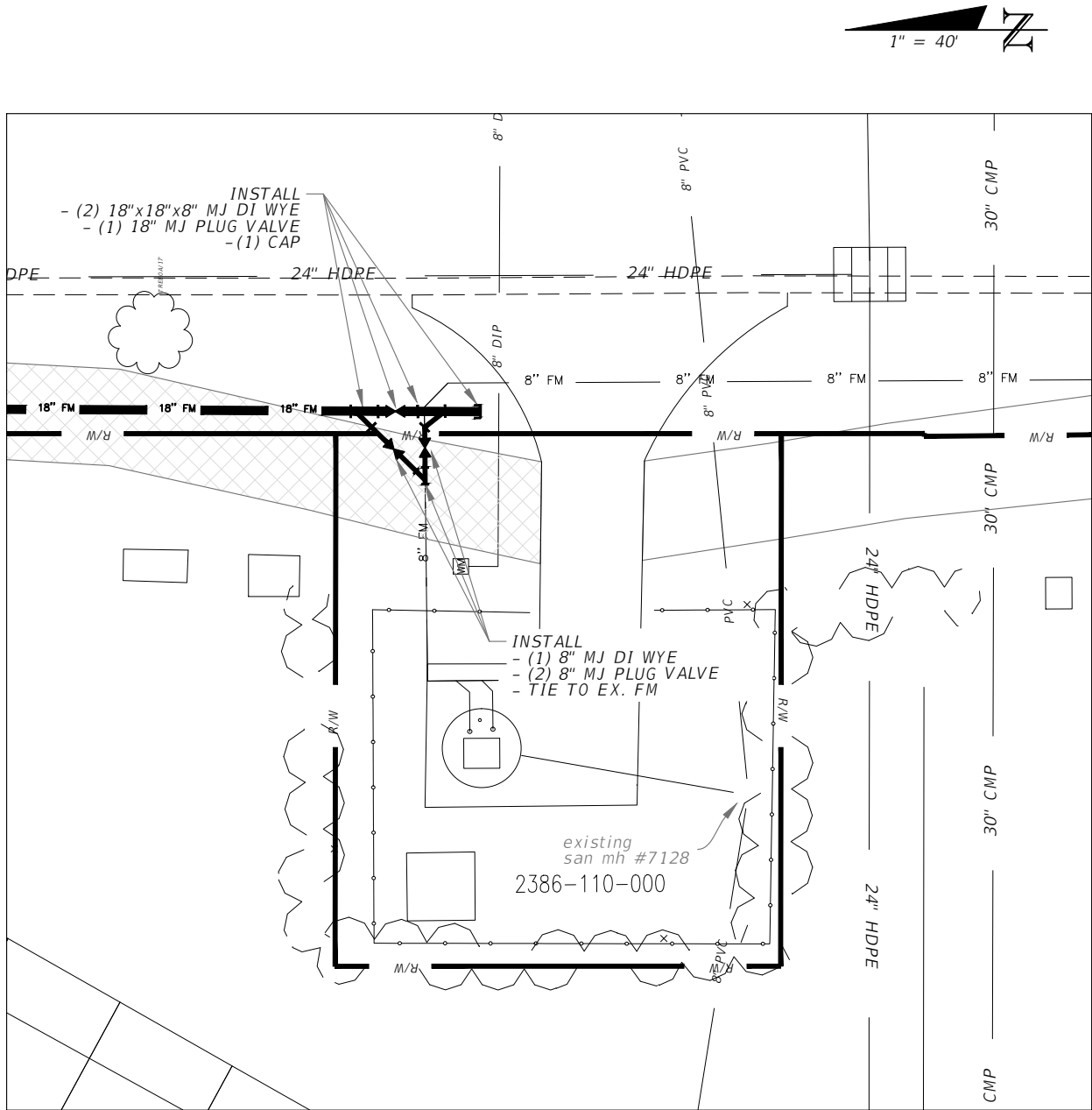




- NOTES
1. RE-SOD ALL DISTURBED AREAS
  2. CONTRACTOR SHALL COORDINATE WITH OCALA UTILITY WHEN TRENCHING NEAR ELECTRIC POLES OR ELECTRIC GUYING (OEU/352-351-6650)



33+00				34+00		35+00		36+00		37+00		38+00			
REVISIONS								<div>HECTOR A. COLON, PE P.E. LICENSE NUMBER 84007 CITY OF OCALA, FLORIDA 1805 NE 30TH AVENUE OCALA, FLORIDA 34470</div>		PREPARED BY		PROJECT NO. 18305-016		SHEET NO.	
DATE		DESCRIPTION		DATE		DESCRIPTION				PROJECT NAME: LS 127 FORCE MAIN REROUTE PHASE 1					
----		----								<div></div>		<div>PLAN &amp; PROFILE</div>		9	



INSET 1  
(FROM SHT #9)

REVISIONS			
DATE	DESCRIPTION	DATE	DESCRIPTION
----	-----	-----	-----

HECTOR A. COLON, PE  
P.E. LICENSE NUMBER 84007  
CITY OF OCALA, FLORIDA  
1805 NE 30TH AVENUE  
OCALA, FLORIDA 34470

PREPARED BY



PROJECT NO. 18305-016

PROJECT NAME: LS 127 FORCE MAIN REROUTE PHASE 1

*PLAN & PROFILE*

SHEET NO.

10